



www.quorumtech.com
+44 (0)1233 646332

TEM/SEM EVAPORATORS

K975X Turbo Evaporator

high vacuum evaporator for TEM, SEM and thin film applications with 250mm chamber

EMITECH
sample preparation

high specification, with digital control

K975X turbo evaporator



K975 Turbo Evaporator

The K975X is a compact, multiple application thermal evaporator. The standard configuration has a carbon rod gun and a metal filament / boat source. An optional sputtering source is available. The K975X is ideal for a wide range of techniques, including carbon support films and replicas for TEM, carbon / metal thin film applications, low angle shadowing and sequential layer coating using dual source evaporation. A chamber implosion guard is included as standard.

Menu-driven control

The menu-driven, microcontroller allows the user access to a range of options, but readily 'defaults' to optimum operating conditions, allowing both fully automatic and manual override as required. A unique sample loading system gives the user easy sample access and the hinged lid assembly makes other areas of the vacuum chamber readily accessible.

Turbomolecular pumping

The K975X uses a modern 100L/sec turbomolecular pump backed up by an external rotary vacuum pump (not included) with the complete pumping sequence being under full automatic control. A wide range of "add-on" options are available (see below).

Note: The K975S is based on the K975X; however its special load lock door allows the loading of wafers up to 200mm (8").

Key Features & Benefits

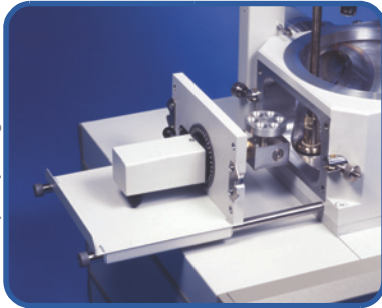
- Menu-driven 'user' key inputs - ideal for multiple user sites
- Wide selection of "add-on" options - allows future upgrade
- Samples up to 140mm square or 200mm diameter
- Unique 'anti-stick' carbon rod gun evaporation assembly - reproducible carbon films
- Rack out drawer sample loading system - easy sample exchange
- Restricted or full vent control - prevents sample disturbance during venting

Options

- K975S Loading stage for up to 200mm (8") wafer samples
- K150P (EK4165) Plug-in FTM module
- EK4165 Film Thickness Monitor (FTM) module plug-in style
- EK4105 Liquid nitrogen trap for enhanced pumping speed and vacuum cleanliness
- EK4175 Sputtering module
- EK4205 Rotating sample stage (planetary style) with externally adjustable tilt angle
- SC7605 Motorised carbon rod shaper for reproducible "stepped" profile rods

See: www.quorumtech.com for full technical specification and additional details.

easy sample stage access



PRODUCT SPECIFICATIONS

| | |
|--------------------------|--------------------------------------------------------------------------------------------------------------------------------------------------------------------------------------|
| Supplied with | Accessory kit including: carbon rods (6.15mm x 100mm), manual rod shaper and operating manual |
| Electrical | 230V 50Hz (8A max including pump), 115V 60Hz (16A max including pump) |
| Specimen stage | 60mm adjustable tilt 0-90°. Distance to electrodes is 110mm to 130mm |
| Weights & dimensions | 450mm W x 500mm D x 300mm H, borosilicate glass chamber with hinged top plate: 250mm x 300mm H (can accommodate samples to 200mm/8"). Weight: 65Kg |
| Carbon source | Adjustable height with tilt control 0-200, uses 6.15mm x 100mm carbon rods |
| Technical specifications | Vacuum gauge: ATM - 1x70 ⁻³ mbar, operating vacuum: towards 10 ⁻³ mbar, ammeter gauge: 0-50A low voltage pulsed select: 0-5V-15V-25V, outgas current: 0-25A |
| Vacuum pumping | 100L/sec turbomolecular pump. Requires a 50L/min rotary pump with oil mist filter (EK3175) |

EMITECH
sample preparation

+34 (91) 4081625
FEDELCO, S.L.

Polaron
cryo preparation

